

Rye Creek Enterprises, Inc

Rye Creek Lodge

Darby, Montana

PO Box 877 Darby, Montana 59829

Thank-you for your recent inquiry! If you are ready for the perfect Montana vacation, then a visit to Rye Creek Lodge may be just what you're looking for. We are a small facility located away from the "crowds" in the most scenic and historical valley in Montana--the Bitterroot Valley. Rye Creek Lodge luxury log cabins are situated in a fertile valley abounding with wildlife. Snowcapped year-round, Trapper Peak provides a magnificent setting for Rye Creek Lodge. Trapper Peak is the most photographed mountain in Montana.

The Bitterroot Valley near the western Montana/Idaho border is a place of serenity, natural beauty and wonder in all four seasons. In spring, the meadows come to life with wildflowers and the air is fresh with new beginnings. In summer, the sun-filled days are perfect for horseback riding, fishing, scenic float trips, hiking and cycling. The Bitterroot Mountains in the fall are a dazzling sight with bright blue skies and quaking aspen shimmering in the sun followed by crisp, cool evenings. Our mild winters are exhilarating with the beautiful sight of fresh powder mornings, the breathtaking view of Bitterroot Mountain panoramas and the thrill of Alpine and Nordic skiing, snowmobiling, snowshoeing or horseback riding through unspoiled snow-covered wilderness.

Our luxury log cabins have all the comforts of home along with private outdoor hot-tubs, massive natural stone fireplaces, and fully equipped kitchens. Enjoy the rugged beauty of Montana while staying in a luxury log cabin! All cabins have three sources of heat which keep them very cozy in the winter. Air conditioning in the summer keep the cabins very comfortable.

We have enclosed information that will be helpful in planning your Montana vacation, along with a few photos of the surrounding area and our accommodations.

Let us know if we can arrange your Montana vacation!
Call toll free 1-888-821-3366

Sincerely,

Mike Nelson

Rye Creek Lodge

Darby, Montana

Aspen, Ponderosa, Granite, Sapphire, Willow, & Trapper Cabins

Hand-hewn log cabins along Rye Creek, where you are likely to see deer, elk, and moose. Rye Creek offers easy access, just 1 1/2 miles on a county road from Hwy 93. Each cabin is completely furnished and each has a complete kitchen, natural stone fireplace, full length covered porch, camp style BBQ, Satellite TV, and a private outdoor hot tub.

Trapper Cabin is named for the mountain peak towering to the west; this secluded cabin is nestled next to Rye Creek. Trapper cabin provides superb accommodations for two singles, two couples, or families with adult children.

Aspen Cabin is situated in the midst of a large stand of Quaking Aspen.

Ponderosa Cabin overlooks a pond stocked with Rainbow Trout up to 22 inches in length.

Granite Cabins setting is a large outcropping of granite boulders.

Sapphire Cabin has great views of the Sapphire Mountain Range.

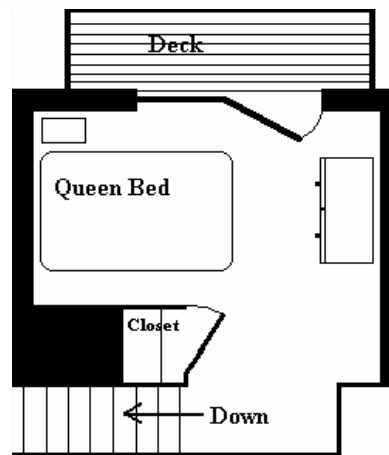
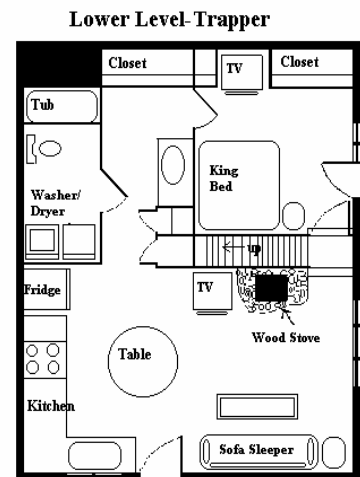
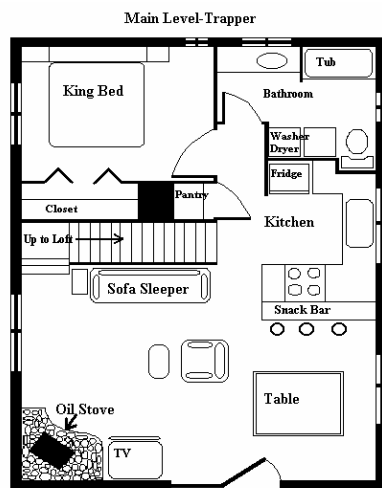
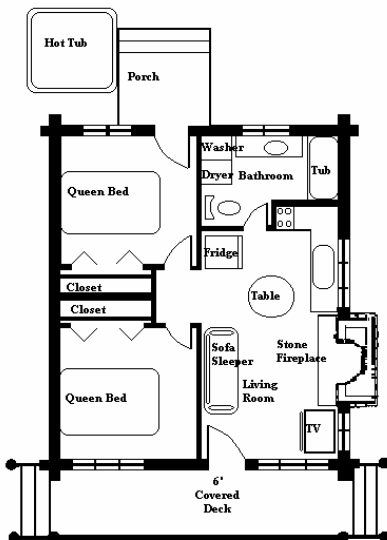
Willow Cabin is our most secluded cabin with “end of the road privacy”.

*** Willow is a one bedroom cabin. The second bedroom in the floor plan below is part of the “living room”.**

Sapphire, Ponderosa, Aspen,

Granite & Willow Cabins (672 Square Feet)

Trapper/Oxbow Cabin (1800 Square Feet)



Loft-Trapper

GENERAL INFORMATION

Rye Creek Lodge

Darby, Montana

CHECK IN TIME: 4:00pm or later

CHECK OUT TIME: Before Noon

OFFICE HOURS: 8:00am - 8:00pm

HOUSEKEEPING SERVICES: Your privacy is our most important priority. Housekeeping services during your stay are provided only by prior arrangements.

LAUNDRY: All cabins have a washer & dryer.

PHONES: All cabins have private telephone lines.

NIGHT SECURITY/ EMERGENCIES: Contact the office at 821-3366.

ANIMAL SAFETY: Do not approach moose. They are very protective of their young.

FAX MACHINE: Use of the facsimile machine is available at the office. Incoming materials will be sealed and delivered to your cabin.

CONFERENCE ROOM: 12-30 people. Available at the Darby Library: 406-821-4771

INTERNET ACCESS: Wireless available at Sapphire and Willow Cabins.

CABIN PHONE NUMBERS

TRAPPER	821-3395	GRANITE CABIN	821-****
OXBOW	821-****	WILLOW CABIN	821-3484
ASPEN CABIN	821-4488	SAPPHIRE	821-****
PONDEROSA CABIN	821-****	OFFICE	821-3366

AREA RESTAURANTS

THE NAUGHTY MOOSE: 5 miles south on Hwy 93 406-821-9955

TRIPLE CREEK RESTAURANT: 8 miles south on Hwy 473 406-821-4408

BROAD AXE: 10 miles south in Sula- by reservation only 406-821-3878

THE ROCKY KNOB: 8 miles south on Hwy 93 406-821-3520

DEBS RESTAURANT : 4.5 miles north in Darby 406-821-4798

SUMMER & FALL ACTIVITIES

HIKING: If you are looking for beautiful scenery and varied terrain, the Bitterroot National Forest is minutes from Rye Creek Lodge. Each trail has something unique to offer, however they all share the spectacular beauty and unspoiled wilderness that the Bitterroot Mountains have to offer.

Chaffin Creek Trail

Elevations: Trailhead 4800 ft.; Hart Lake 7336 ft.; Tamarack Lake 7425 ft.; Chaffin Lake 7505 ft.; Wilderness Area Boundary 5800 ft.

Information from trail signs: Chaffin Creek Trail; Wilderness Area 3 miles

Highlights: From the beginning- Wildflowers; Wilderness Boundary -3 ½ miles; Hart, Tamarack, and Chaffin Lakes- about 8 miles.

Trail conditions: Excellent trail--soft underfoot with a gentle grade. Chaffin Creek Trail has a refreshingly gentle grade--nearly flat--for the first 2 to 3 miles! It then gains elevation rather steadily for about 2 miles before leveling out again. In summer it endears itself to hikers by beginning in a luxurious open forest with abundant wildflowers. The stream, although not the largest in the Bitterroots, has the variety of both white water and still pools. Mountains are not always visible during the first part of the trail, but the stream is nearby. At the end of the trail (about 7 miles) are Hart, Tamarack, and Chaffin Lakes. Two wildflowers are outstanding along this trail. One is the lavender Fairy Slipper. In May, it can be found in a generous cluster rather than as rare single blossom. Not only are these orchids lovely and abundant, but they also smell wonderful--to those willing to bend down to their 3 inch height. The other flower is the Anemone Piperi. It is not showy, but rather has a charming simplicity and grace. The plant has a single white flower at the top of a single 6 inch stem. Its three leaves are immediately below the flower and each is split three ways, making a lacy background for the blossom. Although it is not a rare flower, it is seen infrequently enough to be a new find for many.

Directions: From the Rye Creek Lodge entrance, proceed 1 1/2 miles to Hwy 93. Turn right on Hwy 93 and

within 1/4 mile turn left on the West Fork Road. Within 1/4 mile turn right on Chaffin Creek Road. The road will come to a Y in a few miles, stay right. Continue to the trailhead.

Lake Como Loop

This is an easy, very picturesque hike, ideal as a pre-season hike for those not used to more strenuous activity or guests who are not yet used to the elevations. It is a very pleasant hike at any time, and during the winter the area can be good for skiing or snowshoeing. The setting of the lake is classic with Como Peaks in the background towering over the lake below. The north shore trail may be used only by hikers and bicycles; it is closed to horses and motorcycles. There is another trail at the southeast end of the lake near the boat launch that follows the south shore of the lake. There are full facilities at both trailheads. Both have ample parking areas. To reach the south trailhead, just follow the paved road below the dam to the sign "Rock Creek Trailhead".

Distances (in counter-clockwise direction):

Rock Creek Bridge 3 miles Lake loop 6 1/2 miles

Trail Description: A very good, well-marked and well maintained trail starts west of the north shore campground and parallels the north shore of Lake Como. The first quarter mile is paved for handicapped use. This trail provides the hiker an easy path with few changes in elevation. It offers magnificent views of the lake and of the Como Peaks, and there are numerous wildflowers in the area. The trail crosses several small creeks and provides good access to the lake for fishing at a variety of locations. The distance from the trailhead to the west end of the lake, where Rock Creek flows in, is about three miles. Rock Creek is a fair sized stream. The forest on the west end of Lake Como was burned in 1988. The forests recovery is interesting to observe. At the west end the trail joins the Rock Creek Trail, and a bridge crosses the creek. Don't miss the trail that turns off to the bridge, (if you continue straight you will come to the wilderness boundary in approximately one mile). Take the left fork across the bridge to complete the lake loop to the south shore trailhead. The south shore trail is another excellent, well-used track. It is used heavily by horse packers and occasionally by motorcyclists. The end of the trail is reached at the southeast corner of the lake. If you left a car at the north shore campground, you may just walk across the tip of the large earth dam to the swimming beach and follow the road to the campground and trailhead.

Directions: From the Rye Creek Lodge entrance, proceed 1 1/2 miles to Hwy 93. Turn right on Hwy 93 and travel approximately 5 miles north of Darby. The access to Lake Como is well marked and well used. Turn left after the sign. The Lake and trailhead are 3 1/2 miles from Hwy 93.

HOT-TUBS: Enjoy Montana while relaxing in a private outdoor hot-tub. Hot-tubs are cleaned and maintained on a daily basis. Towels are provided in each cabin.

ATV RIDES: Four wheeled all terrain vehicles are an exciting mode of exploration. A minimum of two riders are required for this activity. The destinations are unlimited. To arrange a ride, contact the office at least one day prior to your desired trip date.

Half day ride.....\$190.00 per person Full day ride.....\$237.00 per person

HORSESHOES: A horseshoe pit is located on the east side of the property. Shoes are kept at the pit.

SCENIC FLIGHTS: An exhilarating way to view the rugged Bitterroot Mountains. Flights are available per hour and each flight can carry three passengers. The rate per hour is \$175.00.

HORSEBACK RIDING: Horseback riding is a unique and pleasurable way to experience the countryside. All rides are off-premises and are accompanied by an experienced guide. Half day: \$75.00 Full day: \$135.00 (includes lunch).

FLY FISHING: An experienced guide will float you down the Bitterroot River for a memorable day of

fishing and/or sightseeing. Lunch is provided. Two people per raft.

FULL DAY FLOAT(5-8 hours of fishing)

1 or 2 people..... \$395.00

FULL DAY WADE FISHING

1 or 2 people..... \$360.00

extra person..... \$70.00

HALF DAY FLOAT(3-4 hours of fishing)

1 or 2 people..... \$370.00

HALF DAY WADE FISHING

1 or 2 people..... \$300.00

extra person..... \$65.00

GOLF: The Hamilton Golf Club is an 18 hole course located a short distance from the Lodge.

WHITE WATER RAFT TRIPS: Float trips are available on the Salmon River (River of no Return), the Bitterroot River and the Clark Fork. Trips range in length from 3 - 5 hours to 2 - 3 days. Reservations recommended in advance. Subject to availability. 4-6 hours on the Salmon River: \$105.00 per person

WINTER ACTIVITIES

GUIDED SNOWMOBILE TOURS: View the Bitterroot Mountains from high above the valley floor. The Bitterroot offers over 50 miles of groomed trails. See frozen waterfalls, creeks and snow-covered meadows. Tours are tailored to the riders. Snowmobiles, helmets and lunch included. Tours start at \$220.00 per person (2 or more people).

SNOWMOBILE RENTALS: We offer one and two passenger rentals for \$170.00 per machine per day.

CROSS COUNTRY SKIING: Chief Joseph Pass cross country ski area is located a scenic half hour drive from Rye Creek Lodge. X-Country rentals are available in nearby Hamilton.

ALPINE SKIING: Lost Trail Powder Mountain is located 25 miles south of Rye Creek Lodge. Equipment rentals are available on the mountain. This undiscovered ski area boasts 300 inches of snowfall per year. Lift tickets are \$25.00.

TOURING DARBY: Step into the past and sample the great shops in the unique town of Darby. Make sure and visit The Old Fashioned Candy Store for great old fashioned candy.

SLEIGH RIDES: View the Sapphire and Bitterroot Mountains from the comfort of a horse drawn sleigh.

Guide Contact Information

FLY FISHING:

Bitterroot Fly Company	406-821-1624	Western Flies & Guides	406-363-9099
Montana Fishing Adventures	406-363-3510	Fly Fishing Always	406-363-0943

RAFTING:

Rawhide Outfitters (white)	208-756-4276	Bitterroot Raft Adv. (scenic)	406-821-9990
Bitterroot Fly Co. (scenic)	406-821-1624		

HORSEBACK RIDING:

Rawhide Outfitters	208-756-4276	Bill Mitchell Outfitters	406-363-3510
Jeff Lang	406-821-4627	Lost Horse Creek	406-363-1460

ATV RIDES & RENTALS:

		Bitterroot Adventures	406-821-4844
--	--	-----------------------	--------------

SNOWMOBILE RIDES & RENTALS:

		Bitterroot Adventures	406-821-4844
--	--	-----------------------	--------------

SCENIC FLIGHTS:

Homestead Helicopters	406-544-0402	North Star Aviation	406-363-6471
Selway Aviation	406-544-5979		

SLEIGH RIDES:

	406-531-2926		
--	--------------	--	--

CHILD CARE:

Big Steps Little Feet	406-821-0014		
-----------------------	--------------	--	--

SLEIGH RIDES:	406-531-2926		
----------------------	--------------	--	--

THERAPUTIC MASSAGE:

Tamara Rackham	406-821-2076
----------------	--------------

Special Adventures

The summer packages below are available June 1st – October 31st

Discovery - From \$3012.50

7 nights - cabin with a private outdoor hot tub for two
 One full day ATV ride for two
 One half day fly-fishing the Bitterroot River for two
 One full day of white water rafting for two
 One full day of horseback riding for two
 Seven dinners for two at The Naughty Moose

Honeymoon - From \$2742.50

7 nights - cabin with a private outdoor hot tub for two
 One full day ATV ride for two
 One half day fly-fishing the Bitterroot River for two
 One full day of white water rafting for two
 Seven dinners for two at The Naughty Moose

The winter packages below are available December 1st – March 31st

Snowman - From \$2725.50

7 nights - cabin with a private outdoor hot tub for two
 3 days of skiing at Lost Trail Powder Mountain for two
 Two full days of guided snowmobiling for two
 Seven dinners for two at The Naughty Moose

Snowball – From \$2190.50

5 nights - cabin with a private outdoor hot tub for two
 2 days of skiing at Lost Trail Powder Mountain for two
 Two full days of guided snowmobiling for two
 Five dinners for two at The Naughty Moose

Snowflake – From \$1275.50

3 night stay in a cabin with a private outdoor hot tub for two
 One day of skiing at Lost Trail Powder Mountain for two
 One full day of guided snowmobiling for two
 Three dinners for two at The Naughty Moose

Scenic Flights

Add to any of the above packages: \$175.00 per hour per airplane- up to 3 passengers per airplane

Per activity Cost

White Water	\$105.00 per person	Horseback	\$155.00 per person
ATV Ride	\$237.00 per person	½ Day ATV Ride	\$190.00 per person
Fly Fishing	\$395.00 per 1 or 2 persons	Naughty Moose	\$50.00 per 2 people
Snowmobiling	\$220.00 per snowmobile	Skiing	\$27.00 per person

The above packages can be customized to individual guests. We give the costs of each activity to give you a general idea of a package that you would like to create. You can remove a day of fly fishing and add a day of horseback riding for example.

How Do I Get There?

Missoula International Airport is 65 miles north of Rye Creek Lodge and is served by:

Delta 800-221-1212

Northwest 800-225-2525

United 800-241-6522

Alaska/Horizon 800-547-9308

Allegiant 702-505-8888

Sky West 800-453-9417

Rental cars:

Avis 800-831-2847

Dollar 800-800-4000

Hertz 800-654-3131

Thrifty 800-367-2277

Budget 800-527-0700

Dollar 406-542-2311

Enterprise 800-325-8007

From Missoula International Airport: drive east [turn right leaving the airport] two and one half miles. Turn right [south] on Reserve Street and travel four and one half miles. Turn right again on Hwy 93 [south]. Travel south on Hwy 93 for approximately 65 miles to Darby. Continue driving south four and one half miles and turn left [east] onto Rye Creek Road. Rye Creek Lodge is one and one half miles after turning onto Rye Creek Road. Spokane, WA is a 4 1/2 hour drive to Rye Creek Lodge and a better airfare is possible. The drive is very scenic and is on Interstate 90 and Hwy 93. Idaho Falls, ID is 3 1/2 hour drive and a better airfare is also a possibility.

Frequently Asked Questions

Q: Can I fish in the pond?

A: Yes, fishing the pond is included in your stay and is available to all guests. Fish caught may be kept. Recommended bait: Power Bait and/or any type of “real food”. Please keep in mind the guests at Ponderosa while fishing the pond

Q: Is there any hiking on the ranch?

A: Yes, there is a trail that leads up the hillside behind the cabins. This leads to a great view of the south Bitterroot and Rye Creek Valleys. The trail begins near the fishing pond between Sapphire and Ponderosa Cabins. The trail is 1.2 miles round trip and gains 450 ft in elevation.

Q: Where is the horseshoe pit located?

A: The horseshoe pit is next to the creek in front of Sapphire Cabin. Shoes are hanging on a tree.

Q: Do you have bicycles for rent?

A: We have two bicycles available for guests use at no charge. They are located outside the front door at the office. Help yourself. The bicycles are on a first come first serve basis. Return them to the office after your ride in a timely manner so they are available to other guests.

Q: How do I order a movie?

A: Call the office for the “pass code”.

Q: Are the cabins equipped with utensils, pots, pans, dishes, linens and paper products?

A: Yes, all you need to bring is food if you want to cook in the cabin.

Q: How do I turn on/off the hot tub?

A: The hot tub remains “on” at all times and will go through filter and heating cycles on its own schedule. The temperature can be adjusted by pushing the “set” button several times and observing if the number is going higher or lower. If it is not going the direction that you want it to then wait until it stops flashing and press it several times again. It will now go in the opposite direction. Stop pressing the button when you get to the temperature setting that you want.

The Bitterroot River

The Bitterroot River runs the length of the Valley and is one of the best kept secrets in Montana among serious fly fishermen. The river is relatively unknown when compared to nearby rivers in the Yellowstone area. Floating the Bitterroot offers all the classic beauty you would imagine your Montana fly fishing experience is supposed to provide. Moving slowly through a wide ranching valley, in and out of cottonwood groves, you will find the mountain views in the distance make it hard to keep your eye focused on your fly. The Bitterroot River is a meandering, braided river that has many deep holes and undercut banks making excellent habitat for the numerous trout which inhabit its waters. The predominant species are Rainbows, with Browns running a close second, and Cutthroats and Brook trout making up the balance. Good fishing normally starts in March on the lower river. Weather prevailing, this “spring” fishing can be phenomenal. Normally the river rises and becomes almost un-fishable from mid-May through the middle of June. The upper Bitterroot can provide outstanding fishing the last two weeks of June during the Salmon fly hatch. This is a sporadic hatch due primarily to the level of the spring runoff. If you plan to fish at this time, please give us a call so we can provide you with up-to-date information on water conditions. Again, the most effective way to fish the Salmon Fly hatch is from a raft or boat; however, if you are willing to buck the heavy current, you can get into some fast and furious action. When the water drops and clears, the fishing picks up dramatically. This usually occurs during the first week of July. Fishing up on top with dry flies is unsurpassed at this time. The entire river can be productive. This exciting fishing usually continues through the first week of August, at which time the water historically drops to its lowest point of the season. The river then receives 15,000 acre-feet of water from Painted Rocks Reservoir during this low- water period. This means continued good fishing throughout the normally low-water month of August and into the first couple weeks in September.

Dry fly fishing begins with a bang on the Bitterroot with the Skwala hatch from mid March into mid April. Experienced anglers know this is the best time of year to entice the big Bitterroot browns to the surface that lurk in the deep water the rest of the season. Other hatches to plan your trip to the Bitterroot around include grey drakes and march browns in the spring, salmon flies and green drakes in late spring, golden stones, bitterroot stones, and pale morning duns in early to mid summer, tricos and hoppers in late summer, and hecubas, mahoganies, and baetis in the fall.

Lost Trail Powder Mountain

Winter in western Montana means skiing. The Northern Rockies, which cut magnificently along the Montana-Idaho border, wring the moisture out of the prevailing eastbound clouds. This moisture, of course, falls as snow. It is deep, and so dry, that the term powder does not do it justice. Montanans refer to their wintry blanket as “cold smoke”.

Just south of Rye Creek Lodge on Highway 93 is a well-kept secret: Lost Trail Ski Area. Lost Trail draws skiers from all over western Montana, with its average snowfall of 300 inches, its four double chair lifts, rope tow and its superb mixture of beginner, intermediate and advanced runs. Lost Trail has a vertical drop of 1800 feet, and no run is lower than 6400 feet, with a top elevation of 8200 feet. The ski season, one of the longest in the state, generally begins December 1st and runs through the first week of April. Equipment can be rented at the Lost Trail Ski Lodge. In addition to downhill skiing, Lost Trail is the start-off point for hundreds of miles of cross-country ski trails. When the skiing day is done, what could be more inviting than a long soak in a hot springs? There are several hot springs within a short distance from the lodge that provide not only outdoor pools but indoor whirlpool spas and saunas.